

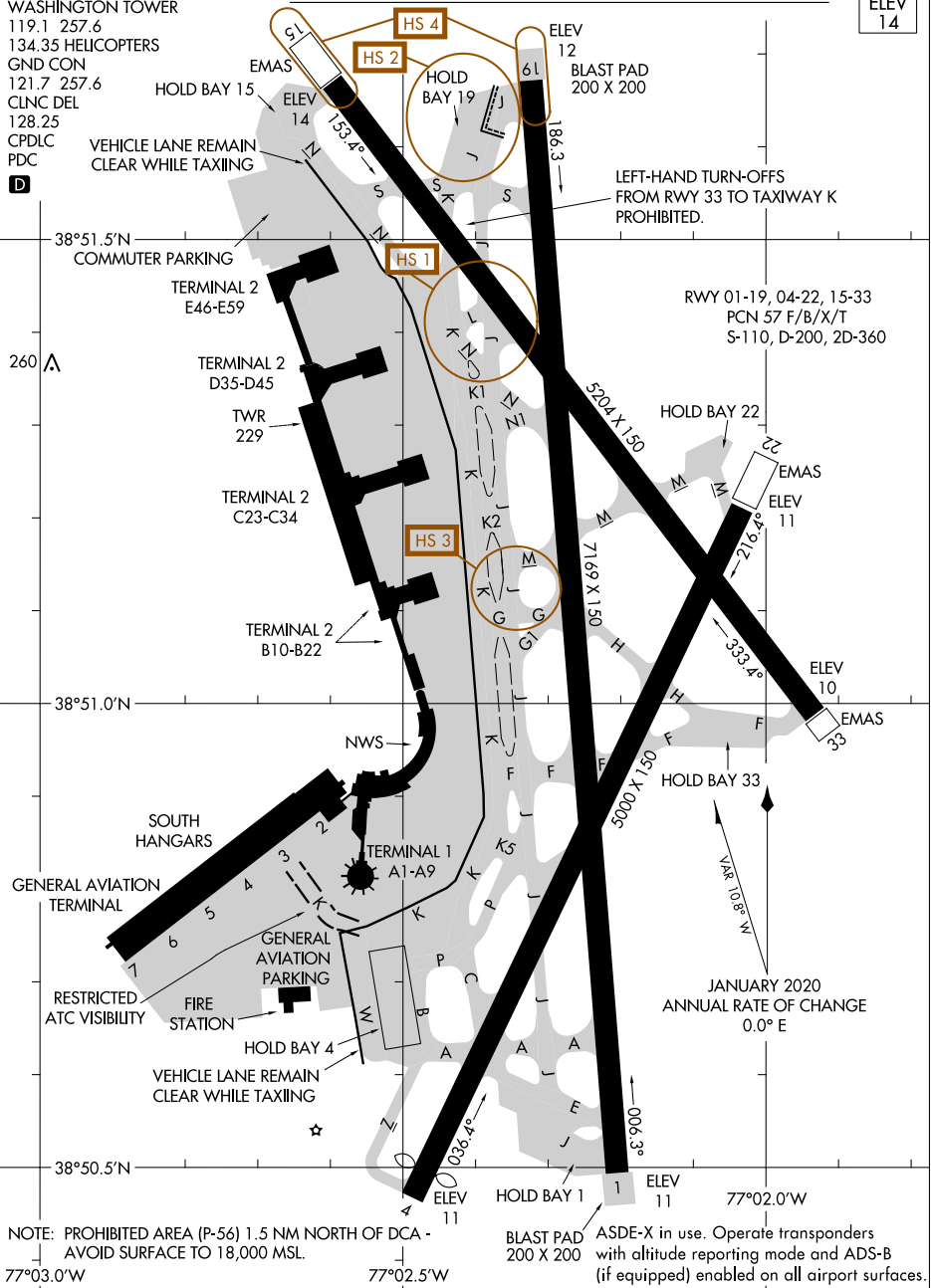
AL-443 (FAA)

WASHINGTON, D.C.

D-ATIS
132.65
WASHINGTON TOWER
119.1 257.6
134.35 HELICOPTERS
GND CON
121.7 257.6
CLNC DEL
128.25
CPDLC
PDC

CAUTION: BE ALERT TO RUNWAY CROSSING CLEARANCES.
READBACK OF ALL RUNWAY HOLDING INSTRUCTIONS IS REQUIRED.

FIELD
ELEV
14



NOTE: PROHIBITED AREA (P-56) 1.5 NM NORTH OF DCA - AVOID SURFACE TO 18,000 MSL.
77°03.0'W 77°02.5'W

BLAST PAD 200 X 200 ASDE-X in use. Operate transponders with altitude reporting mode and ADS-B (if equipped) enabled on all airport surfaces.

NE-3, 29 DEC 2022 to 26 JAN 2023

NE-3, 29 DEC 2022 to 26 JAN 2023